



United States Department of the Interior



BUREAU OF LAND MANAGEMENT

Winnemucca District Office

Black Rock Field Office

5100 East Winnemucca Boulevard

Winnemucca, Nevada 89445

Phone: (775) 623-1500 Fax: (775) 623-1741

Email: wfoweb@blm.gov

<https://www.blm.gov/office/winnemucca-district-office>

In Reply Refer To:

NVN-88151X

3200/2800 (NVW010.28)

OCT 01 2020

Dear Interested Party,

The Bureau of Land Management (BLM), Winnemucca District, Black Rock Field Office is accepting pre-scoping comments on a Utilization Plan (UP), and a Plan of Development (POD) proposed by Ormat Technologies Inc. (Ormat) for the Gerlach, NV area. At present, the BLM is uncertain if an Environmental Assessment (EA) or an Environmental Impact Statement (EIS) will be prepared. The 60-day pre-scoping period will end November 30, 2020.

The Gerlach Geothermal Development Project (the Project) proposed by Ormat is less than one-mile north of Gerlach, NV in Washoe County, see Figure A-1. The Gerlach geothermal resource area includes leased and unleased BLM lands, and privately leased lands. Principal access to the project area will occur using the access route from County Road 34, see Figure A-1.

As part of this project, the BLM is analyzing the environmental effects of building two new power plants that would each produce 24 megawatts of electricity, an electrical substation, up to twenty-three total geothermal production and injection wells, approximately 4.6 miles of above ground pipelines, access roads, and an approximately 26-mile long 120 kilovolt overhead power line originating at one of the proposed power plants and terminating at the North Valley Substation in the San Emidio Desert, see Figure A-2.

To generate low voltage power at the proposed facility, geothermal liquid pumped to the surface by the proposed production wells would be circulated in a closed-loop binary energy production system and then re-injected back into underground geothermal reservoirs through the proposed injection wells. The proposed above ground pipelines would move the geothermal liquids from the production wells to the power plants and back to the injection wells. The electrical substation will transform the low voltage power into high voltage power for transport along the power line.

The proposed overhead power line would transport the energy generated from the project to the North Valley Substation for transport to the commercial market. The proposed line would mostly parallel an existing 500kV transmission line and use existing access roads in some locations for construction and maintenance.

The BLM is requesting comments be submitted to blm_nv_wdo_gerlach_geothermal@blm.gov or the above address by November 30, 2020.

Sincerely,

A handwritten signature in blue ink that reads "Mark E. Hall". The signature is written in a cursive style with a large, prominent "M" and "H".

Mark E. Hall, Ph. D.
Field Manager
Black Rock Field Office

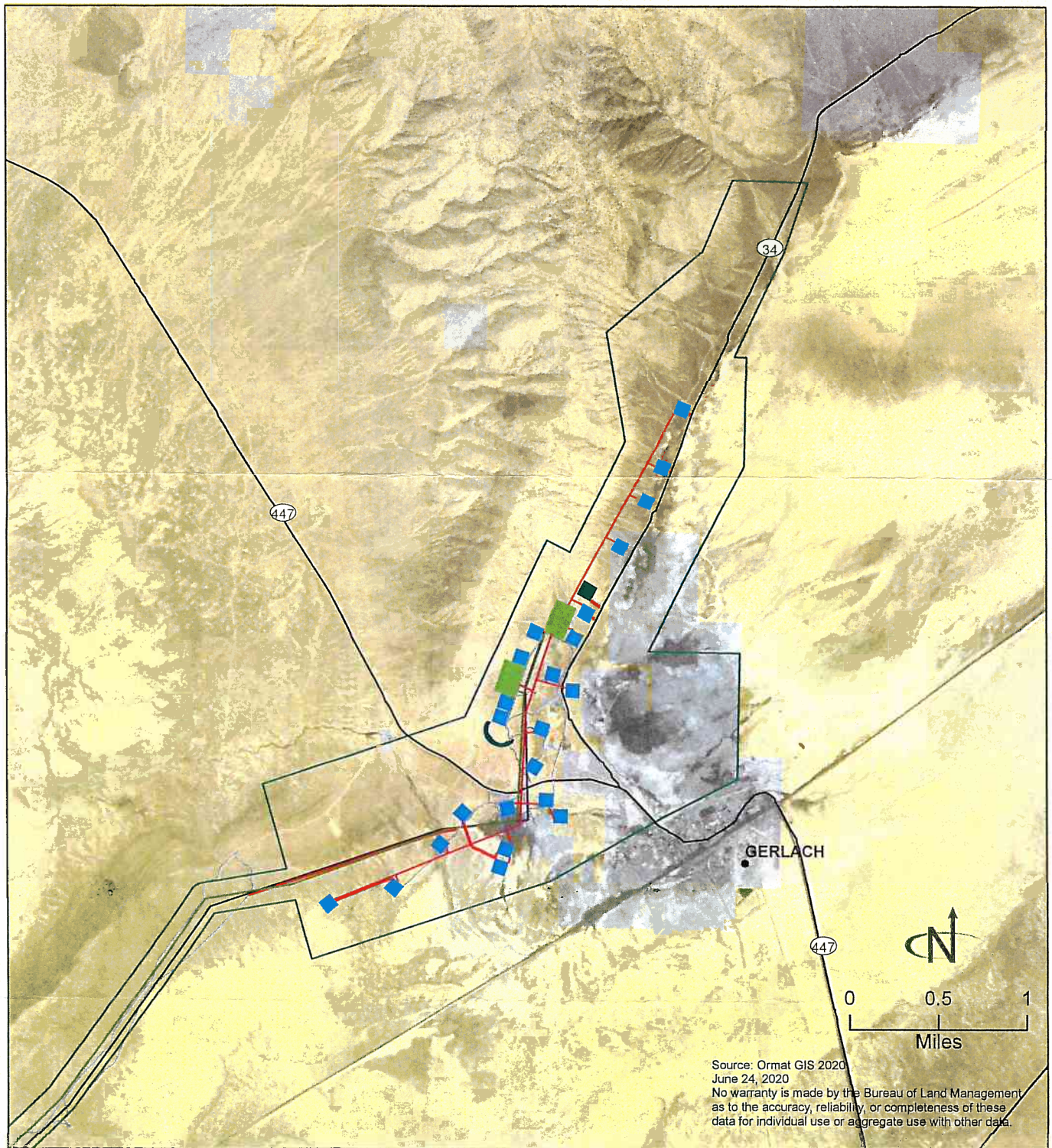


Figure A-1 Gerlach Geothermal Development Project Area of Interest

- | | | | |
|---|--|--|--|
| ■ Wellpads | — Pipeline | ■ Power plant | BLM |
| — New road | — Existing road | ■ Aggregate pit | Private |
| — Transmission line | — Transmission line alignment | Gerlach geothermal AOI and transmission line corridor | |

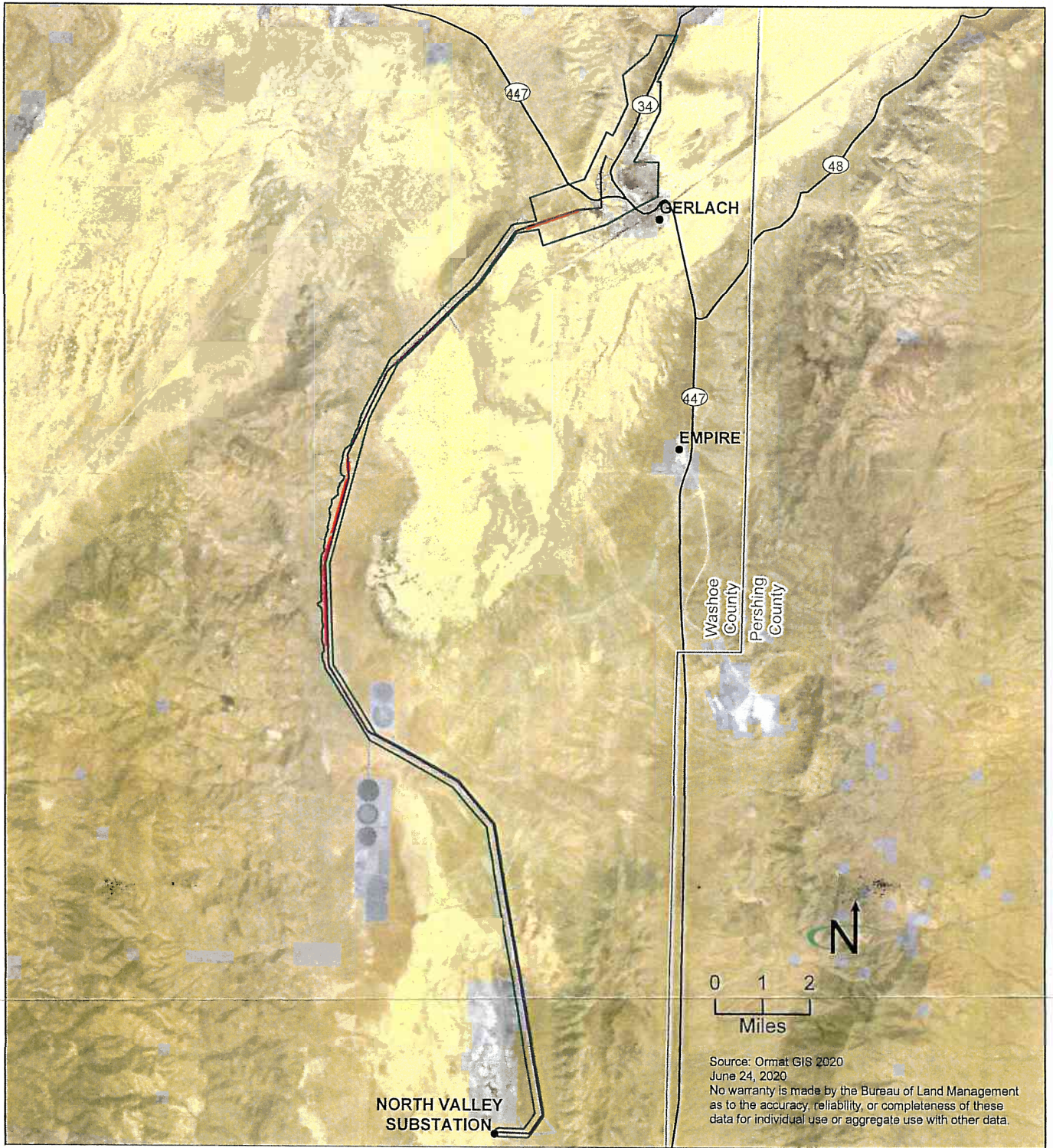








Figure A-2. Gerlach Geothermal Development Project Overview

- | | |
|---|---|
|  Gerlach geothermal AOI and transmission line corridor |  Transmission line alignment |
|  BLM |  Existing access road |
|  Private |  New access road |